

## J2 BUILDING CONSULTANTS, INC.

### OFFICES

8425 44th Avenue West  
Mukilteo, WA 98275

17 Southwest Gibbs Street  
Portland, OR 97239

175 South Main Street, Ste 500  
Salt Lake City, UT 84111

### CONTACT

Jens Johanson, Owner  
Direct: 425-248-2740  
Cell: 206-755-7790  
[JensJ@J2Consultants.com](mailto:JensJ@J2Consultants.com)

### WEBSITE

[www.J2Consultants.com](http://www.J2Consultants.com)

### PROFESSIONAL LICENSES

- Architecture
- Engineering
- Construction

### AFFILIATIONS

- AIA
- BOMA
- IFMA
- RCI
- WSSHE



## COMMERCIAL CAPABILITIES STATEMENT

### SUMMARY OF SERVICES

We are building doctors - architects and engineers who help buildings that aren't performing properly. Our services include investigation and assessment, preparing details and specifications for the repair, and oversight or management of the contractor performing the repairs. Our team includes architects, engineers, roof consultants, construction managers, and quality control inspectors. All of our team members have extensive experience in building repairs.

### CAPABILITIES AND CORE COMPETENCIES

- **Leak Diagnosis and Water Penetration Testing (Building Envelope)**
  - Cladding, Curtain Wall, and Façade Inspections
  - Windows and Window Installation Assemblies
  - Plaza and Deck Assemblies
  - Roof Systems
  - Sealants and Membranes
- **Architectural and Engineering Design**
  - Plans and Specifications
  - Scopes of Repair
  - Detailing for Repairs
  - Schematic Modeling and Color Studies
  - Cost Estimating
  - Construction Permit Documents
- **Owner Representation**
  - Contractor Oversight
  - Quality Control Inspections
  - Change Order Reviews
  - Project management
  - Close Out and Warranty Documents
- **Second Opinions and Peer Review**
- **Capital Replacement Plans**
- **Property Condition Assessments and Maintenance Inspections**

For more information about J2's services, please contact:

**Jens Johanson • 425-774-5600 • [JensJ@J2Consultants.com](mailto:JensJ@J2Consultants.com)**



## PAST PERFORMANCE

### Arnold Pavilion

- CBRE, Bob Hamilton

### 5<sup>th</sup> and Pine

- CBRE, Sarah Anderson

### Millennium Tower

- CBRE, Dennis Bishop

### Riverview Plaza

- UNICO, Scott Stacy

### Bellevue School District Office Building

- Bellevue School District, Jack McLeod

### 1201 Third Avenue

- Wright Runstad, Jeff Kasowski

### Metropolitan Park

- CBRE, Julie Shaw

### Lincoln Square Tower

- Kemper Development, Dave Nieman

### Meydenbauer Center

- Bellevue Convention Center Authority, Tim Carr

### Longwell Building

- Kidder Mathews, Tom Sante

### Seattle University

- Loyola Building, Kavik Frot

### Two Union Square

- Washington Holdings, Rick Mock



## RECOMMENDATIONS AND CLIENT QUOTES

"All my dealings with J2 were pleasant, timely, and professional. J2 was a major asset in the successful and timely completion of the project. I would highly recommend J2 to any other agency or private firm seeking a qualified, professional building envelope consultant/architectural firm"

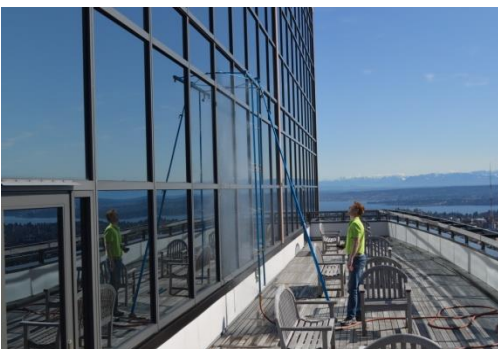
- Chris Bogdan, HASCO

"Thank you J2. You and your folks have been excellent to work with on completing this PCA project on time and we hope to be able to use your services again soon."

- Jack McLeod, Bellevue School District

"We've been impressed with their level of attention to detail...Overall; due to the diligence of J2 Building Consultants we are going to come under budget for this project in light of all the unforeseen. Thank you."

- Amber Spink, CWD Group



For more information about J2's services, please contact:  
**Jens Johanson • 425-774-5600 • JensJ@J2Consultants.com**