

J2 BUILDING CONSULTANTS, INC.

OFFICES

19730 64th Ave W, Ste 201
Lynnwood, WA 98036

17 Southwest Gibbs Street
Portland, OR 97239

175 South Main Street, Ste 500
Salt Lake City, UT 84111

CONTACT

Jens Johanson, Owner
Direct: 425-248-2740
Cell: 206-755-7790
JensJ@J2Consultants.com

WEBSITE

www.J2Consultants.com

PROFESSIONAL LICENSES

- Architecture
- Engineering
- Construction

AFFILIATIONS

- AIA
- BOMA
- IFMA
- RCI
- WSSHE



COMMERCIAL CAPABILITIES STATEMENT

SUMMARY OF SERVICES

We are building doctors - architects and engineers who help buildings that aren't performing properly. Our services include investigation and assessment, preparing details and specifications for the repair, and oversight or management of the contractor performing the repairs. Our team includes architects, engineers, roof consultants, construction managers, and quality control inspectors. All of our team members have extensive experience in building repairs.

CAPABILITIES AND CORE COMPETENCIES

- **Leak Diagnosis and Water Penetration Testing (Building Envelope)**
 - Cladding, Curtain Wall, and Façade Inspections
 - Windows and Window Installation Assemblies
 - Plaza and Deck Assemblies
 - Roof Systems
 - Sealants and Membranes
- **Architectural and Engineering Design**
 - Plans and Specifications
 - Scopes of Repair
 - Detailing for Repairs
 - Schematic Modeling and Color Studies
 - Cost Estimating
 - Construction Permit Documents
- **Owner Representation**
 - Contractor Oversight
 - Quality Control Inspections
 - Change Order Reviews
 - Project management
 - Close Out and Warranty Documents
- **Second Opinions and Peer Review**
- **Capital Replacement Plans**
- **Property Condition Assessments and Maintenance Inspections**

For more information about J2's services, please contact:

Jens Johanson • 425-774-5600 • JensJ@J2Consultants.com



PAST PERFORMANCE

Arnold Pavilion

- CBRE, Bob Hamilton

5th and Pine

- CBRE, Sarah Anderson

Millennium Tower

- CBRE, Dennis Bishop

Riverview Plaza

- UNICO, Scott Stacy

Bellevue School District Office Building

- Bellevue School District, Jack McLeod

1201 Third Avenue

- Wright Runstad, Jeff Kasowski

Metropolitan Park

- CBRE, Julie Shaw

Lincoln Square Tower

- Kemper Development, Dave Nieman

Meydenbauer Center

- Bellevue Convention Center Authority, Tim Carr

Longwell Building

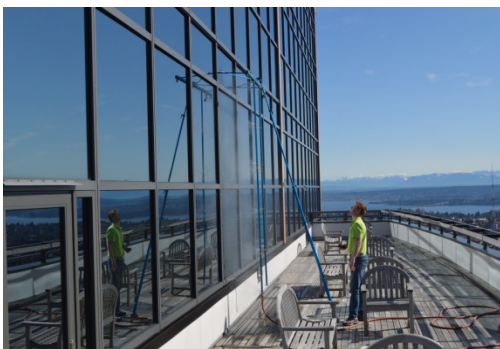
- Kidder Mathews, Tom Sante

Seattle University

- Loyola Building, Kavik Frot

Two Union Square

- Washington Holdings, Rick Mock



RECOMMENDATIONS AND CLIENT QUOTES

"All my dealings with J2 were pleasant, timely, and professional. J2 was a major asset in the successful and timely completion of the project. I would highly recommend J2 to any other agency or private firm seeking a qualified, professional building envelope consultant/architectural firm"

- Chris Bogdan, HASCO

"Thank you J2. You and your folks have been excellent to work with on completing this PCA project on time and we hope to be able to use your services again soon."

- Jack McLeod, Bellevue School District

"We've been impressed with their level of attention to detail...Overall; due to the diligence of J2 Building Consultants we are going to come under budget for this project in light of all the unforeseen. Thank you."

- Amber Spink, CWD Group

For more information about J2's services, please contact:
Jens Johanson • 425-774-5600 • JensJ@J2Consultants.com